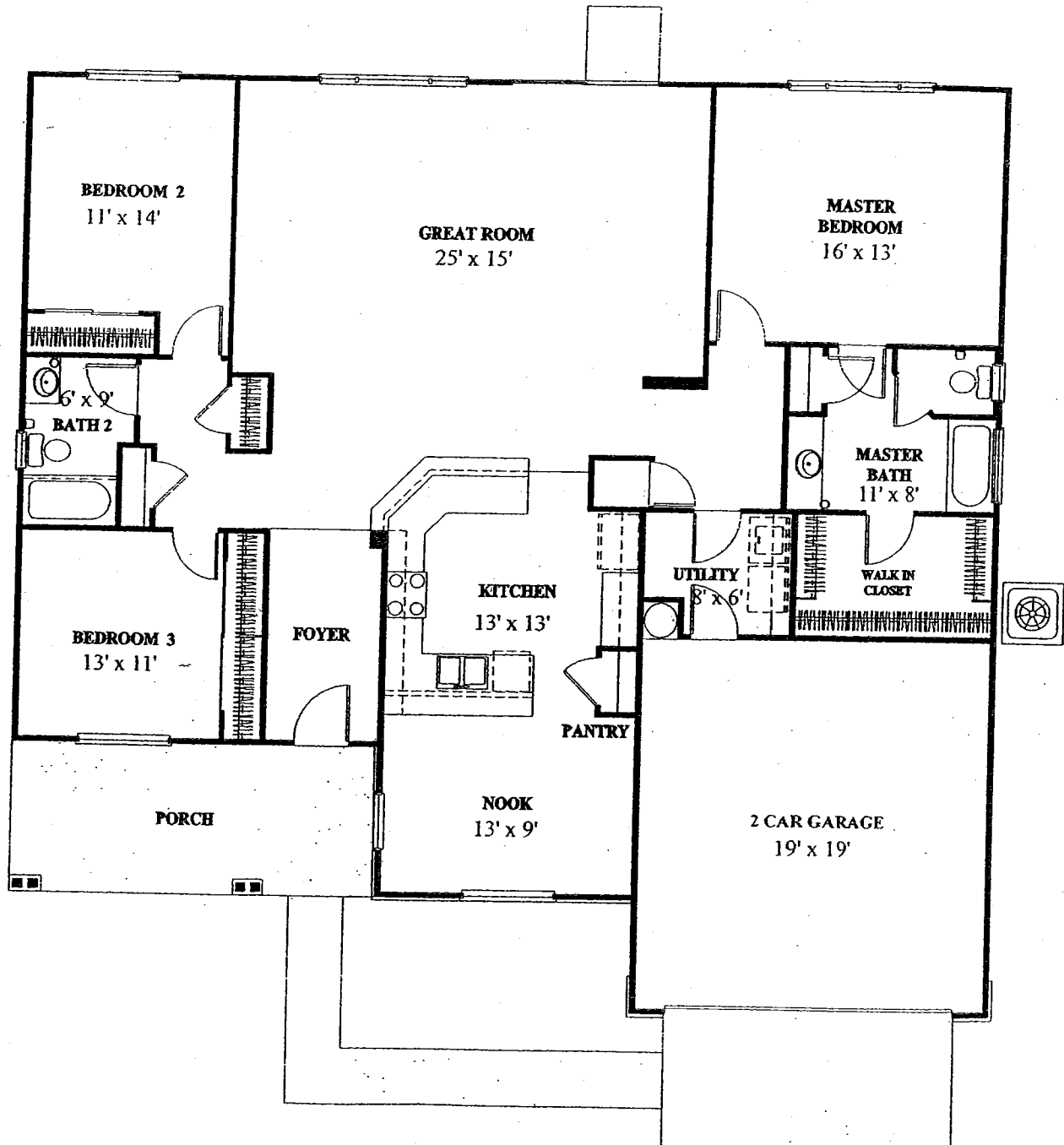


The Chisholm 10203

Approximate Livable Area - 1,937 Sq. Ft.



Call Sun City Texas by Del Webb at 1-800-833-5932 or 512-931-6900

Due to normal construction tolerances, square footage may vary from those shown on floorplans. Floorplan illustrations are artists' conceptions and are not intended to show specific detailing. Model representations and options subject to change without notice.